



GMT MONTHLY MEMBERSHIP PROGRESS REPORT

Results as of: 4/30/2018

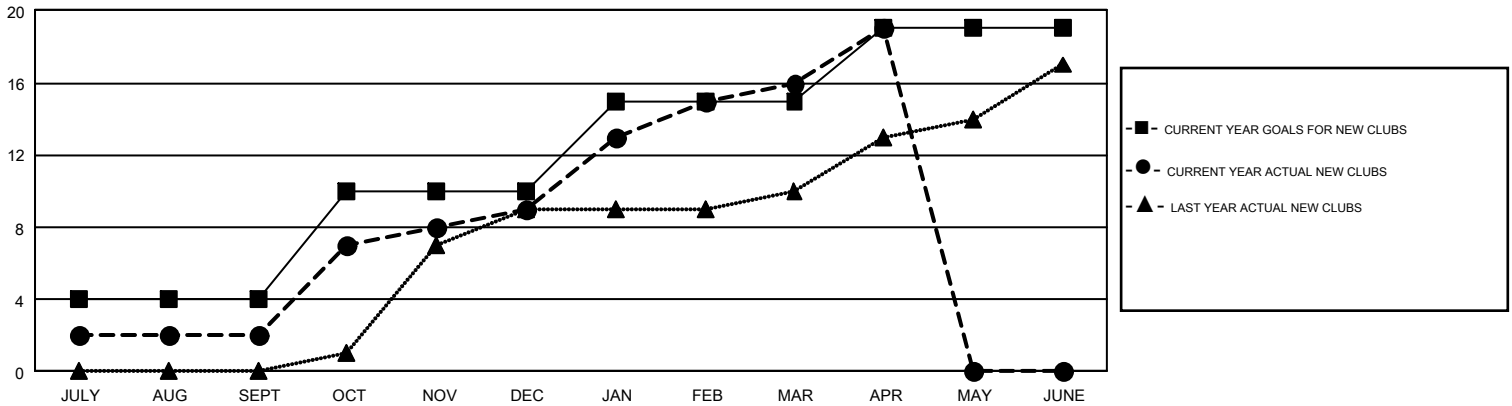
GMT Constitutional Area 6-Afr, Group L

GMT: KAMAL JOSHI

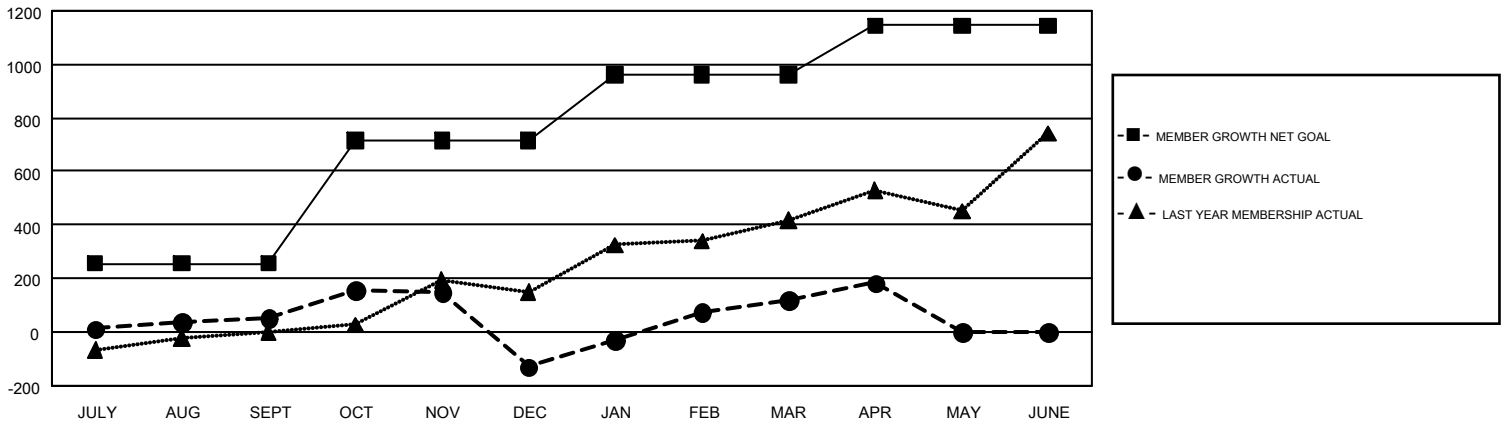
REPORT DOES NOT INCLUDE CLUBS IN UNDISTRICTED AREAS.

Clubs				Members			
RESULTS FOR 2017-2018				RESULTS FOR 2017-2018			
QUARTER	NEW CLUB GOAL	NEW CLUBS	DROPPED CLUBS	QUARTER	MEMBER GROWTH NET GOAL	MEMBER GROWTH ACTUAL	DROPPED MEMBERS ACTUAL (including transfers)
JULY/AUG/SEPT	4	2	0	JULY/AUG/SEPT	256	218	160
OCT/NOV/DEC	6	7	8	OCT/NOV/DEC	459	361	513
JAN/FEB/MAR	5	7	0	JAN/FEB/MAR	248	391	108
APR/MAY/JUNE	4	3	0	APR/MAY/JUNE	182	130	62

GOALS AND ACTUAL NEW CLUBS CUMULATIVE



GOALS AND ACTUAL MEMBERS CUMULATIVE



DROPPED CLUBS: 8	135 CLUBS OF 250 ADDED 1 OR MORE NEW MEMBERS	GENDER DISTRIBUTION MALE 3,827 (61.57%) FEMALE 2,389 (38.43%)
DROPPED MEMBERS DECEASED 33 CLUB CANCELLED 138 OTHER 672 <hr/> TOTAL 843	CLICK HERE FOR CUMULATIVE MEMBERSHIP DATA	TOTAL FAMILY UNIT MEMBERS 1,255 FAMILY MEMBERS PAYING HALF DUES 700